



Widening Participation Project



Sarah Tervit
Widening Participation Coordinator

Anna Vogt
Head of Inclusion & Student Services

Say hello!

Introduce the work of the
Widening Participation Project
(WPP)

Ask you to consider how a whole
systems approach can benefit
individual bespoke WP
interventions

Hear your thoughts and feedback

Purpose of today



Widening Participation

Widening Participation activities and interventions are aimed at **creating an education system that includes all who can benefit from it**. These activities and interventions are particularly focused on those facing social, cultural economic or institutional barriers and typically under-represented groups.

(Action on Access, 2005).

01

Understand the transition journey and how it is experienced by students from WP backgrounds

02

Develop a rich understanding of the impact of transition on the differential outcomes for students from WP backgrounds in their first year of FVC

03

Review current FVC policies, practices and services, to assess their impact on WP student groups

WPP – Year 1
2022/23



Create a cohesive, college-wide approach to meeting the needs of WP student groups throughout their student journey



Move towards a robust, standardised transition process that supports the best start to the student journey at FVC for all students regardless of background or circumstance



Make recommendations for a suite of evidence-based activities and interventions that contribute to improved retention and achievement rates for students from WP backgrounds.

WPP Year 2
2023/24

2017

FVC awarded £147,000 by The Robertson Trust to design, develop and implement the Time4Me Mentoring project over 2 1/2 years.



2020

Success of Time4Me leads to a further funding commitment of 2 academic years by The Robertson Trust.



2021

Independent evaluation of Time4Me evidences positive impact of mentoring

Lessons Learned



2022

Time4Me evolves into the Widening Participation Project (WPP)

Q. What other activities and interventions would enhance the transition process for students from particular backgrounds?



Why the WPP though?



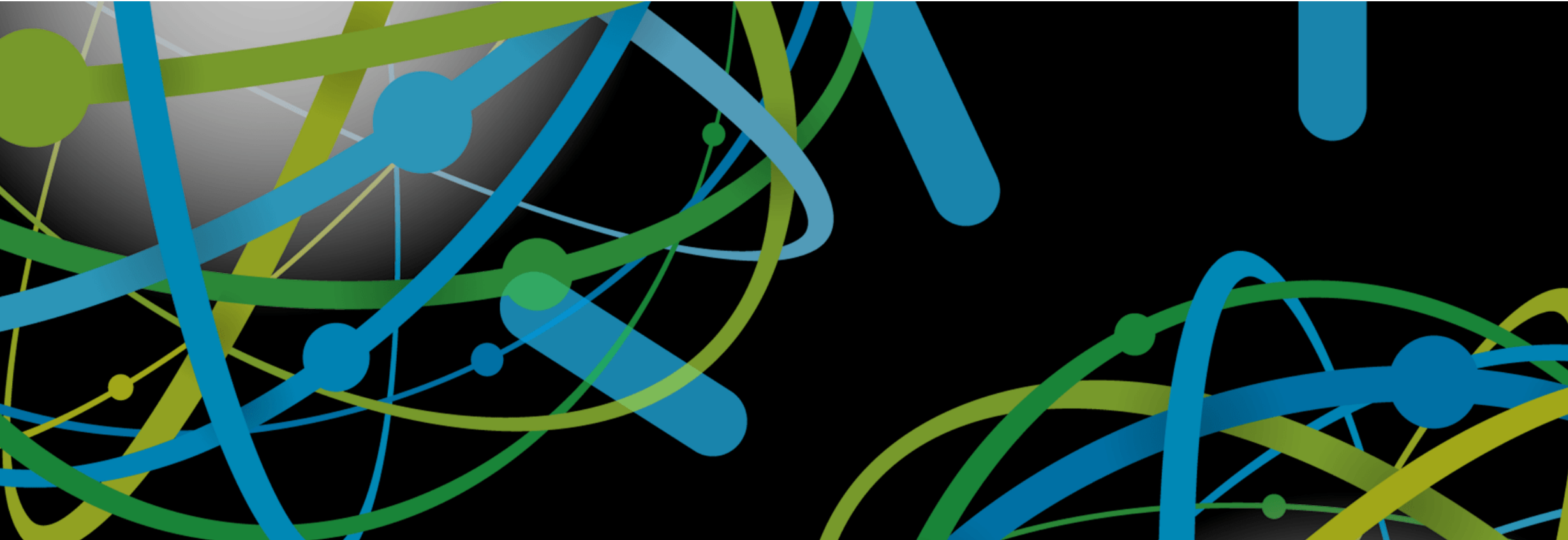
Who are our students?



Financial threats (and opportunities)



The (ongoing) challenge of 'effective'
transition



Need for a whole college systems approach &
Widening Participation Strategy

Year 1 –
2022/23

Nov. 22 Stakeholder discussions

Jan 23 Data & policy analysis

Feb. 23 Student feedback

May 23 Sector wide scoping exercise

June 23 Recommendations made

What we know so far...

Huge appetite among all of our partners

Top 3 priority areas for improving transitions

- Information Sharing
- Improving support for decision making
- Getting the timing of transitions activity right

Students from WP backgrounds disproportionately disadvantaged by attendance management and student disciplinary procedures

Early intervention works

We need to continuously evaluate impact as part of practice

Theme 5: College Support to Succeed

Early identification of those in need of enhanced transition

WP Strategy -
Systems,
Policies & procedures

Mechanisms to provide enhanced support

Transparent, easy to find information for future student (theme a & g)

Schedule of enhanced transition activity (theme a)

Data analytics - predictive allocation of resource

Transition information sharing (theme z)

Standardised approach to reviewing engagement

Getting to know the student need

PVC pre-entry Support & Guidance

PVC key contact directory

Post school destination meetings

Matrix of needs leads to targeted intervention

Who is 'at risk' - partnership approach to prevent disengagement

Examples of individualised support packages

Named Contact support

Mentor/Buddy schemes

Laptop from day 1

Nurture spaces

Relationship based practice

Relevant policies and procedures to be considered include:

Digital Inclusion, Attendance Management, Student Discipline, Equalities, GDPR, Student Funding

Further Info



[Widening Participation Project | Forth Valley College](#)



sarah.tervit@forthvalley.ac.uk
anna.vogt@forthvalley.ac.uk